

# W:Hall

**FICHE TECHNIQUE**  
**TECHNISCHE FICHE**  
**TECHNICAL SHEET**

V.2026-03

## **AUDITORIUM**

<https://www.locationwhall.com/auditorium>

### **Contact**

Technical Director : Maxime Munson – [mmunson@whall.be](mailto:mmunson@whall.be) - +32 2 435 59 88

Stage Manager (Light) : Rudy Vantighem – [rvantighem@whall.be](mailto:rvantighem@whall.be) - +32 2 435 59 85

Stage Manager (Light) : Nicolas Moulart – [nmoulart@whall.be](mailto:nmoulart@whall.be) - +32 2 435 59 86

Stage Manager (Sound) : Jan Philips – [jphilips@whall.be](mailto:jphilips@whall.be) - +32 2 435 59 87

Stage Assistant : Besnik Bashota - [bbashota@whall.be](mailto:bbashota@whall.be) - +32 2 435 59 84

Room & Hosting manager : Miguel Caro – [mcaro@whall.be](mailto:mcaro@whall.be) - +32 2 435 59 82

## Sound

### Sound System

- Line Array D&B + Front Field Stage & Balcony
- 10x D&B MAX 15"
- Desk Yamaha LS9-32 / DM7C / QL1
- Multi 24/12
- Rio 3224D2

### Micros

- 6x Audix ADX-51
- 2x Audix OM5
- 4x Audix ADX-60
- 2x Audiotechnica AT8538 (PRO35)
- 2x AKG C414 XL II
- 5x Sennheiser MD441-U
- 2x Sennheiser MKH 415-T
- 1x Sennheiser MD421 II
- 1x Sennheiser MS14P
- 2x Sennheiser 815 T-U
- 2x Sennheiser E904
- 4x Sennheiser E906
- 7x Shure SM57
- 5x Shure SM58
- 1x Shure Beta 52A
- 4x Shure Beta 57A
- 4x Shure Beta 58A
- 1x Shure 87
- 6x Shure Microflex (capsule 185 cardioïde)
- 4x Shure Beta 58A HF (QLXD2 H51)
- 8x Emetteur Shure QLXD1 H51
- 4x DPA Skin Colour (4066)
- 2x DPA Black (4060)
- 4x DPA Skin Colour FIO66F00-2

### Micros – Drum

- 1x Audix i5
- 2x Audix D2
- 1x Audix D4
- 1x Audix D6

### DI BOX

- 5x DI BSS AR133
- 3x DI JDI Stereo
- 6x DI JDI Mono

### Player

- 1x Double CD Player
- 1x MD & DA Player
- 1x PC

### Backline

- 1 x Piano Steinway 3/4 model B

### Stage Decks

- 24x 2m x 1m
- 10x 2m x 0,5m
- 5x 1m x 1m

### Stage Legs

- 40x 20cm
- 40x 40cm
- 68x 60cm
- 60x 80cm
- 20x 100cm

## Video

### Video Projector

- 1x Barco DP2K – 20C – 20 000 Lumen

### Diffusion

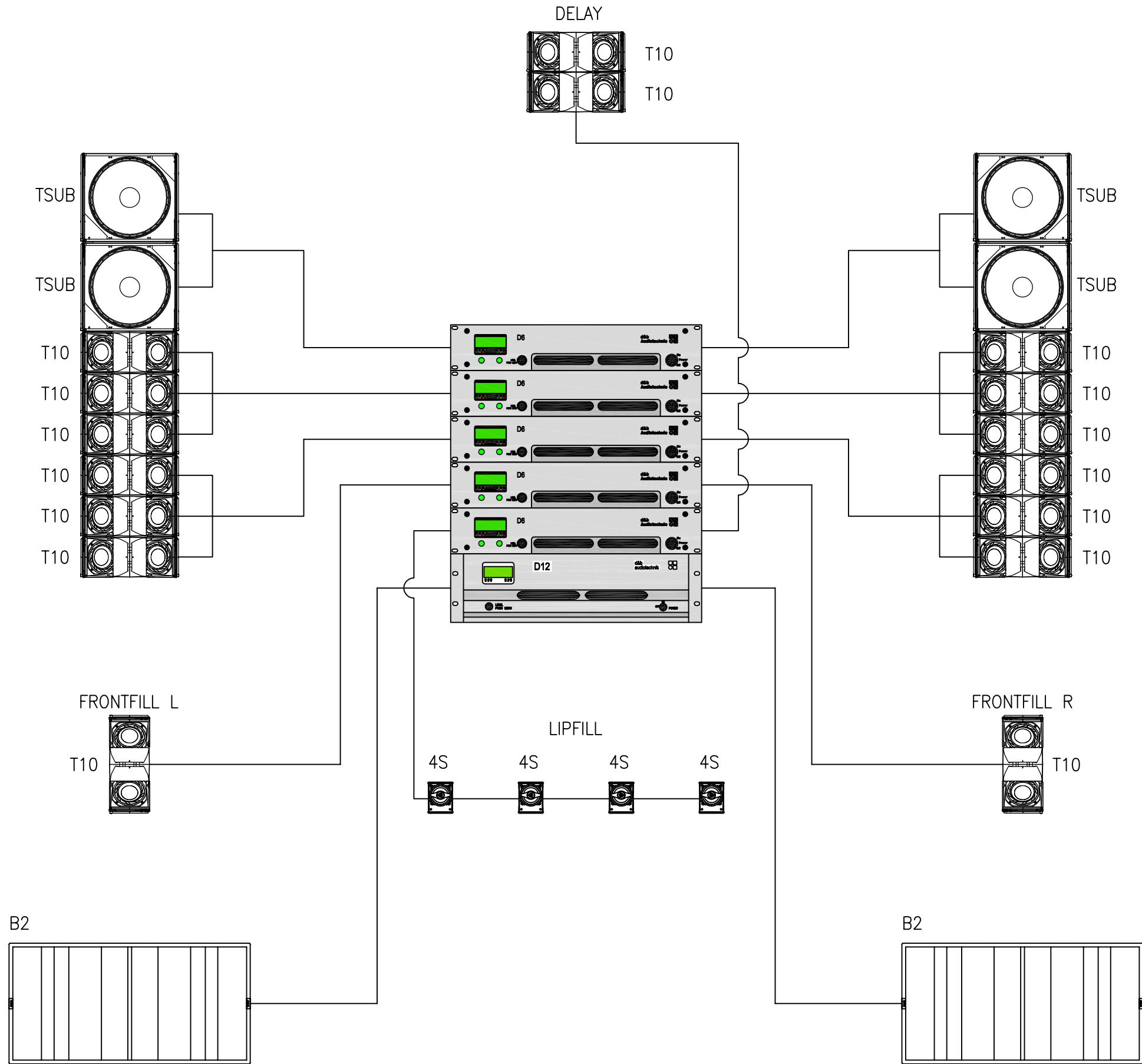
- 1x Barco Image Pro Série 2

### Screen

- 1x Polichinelle Screen 8m x 8.5m
- 1x Cyclorama 8m x 8m

### Player

- 1x DCP
- 1x DVD / Blue Ray Player
- 1x PC



**AMPTEC**  
 professional sound solutions  
 DUIFHUISWEG 11 TEL: +32.11.28.14.58  
 3590 DIEPENBEEK FAX: +32.11.28.14.59  
 BELGIUM SALES@AMPTEC.BE

CUSTOMER: Sint Pieterswoluwe  
 PROJECT: K:\SINT PIETERSWOLUWE\20120370 geluidsmaterieel\Technisch\Kablage  
 TITLE: PA Ontwerp  
 DRAWING NAME: PA Ontwerp\_A1.dwg

|             |           |
|-------------|-----------|
| REVISION:   | A1        |
| DATE:       | 4/02/2013 |
| DESIGN:     | FGL       |
| INIT. DATE: |           |
| SCALE:      |           |
| PAGE:       | Size: A   |

# Light

## Desk

- 1x GrandMA 3 Compact XT (Soft 2)
- 1x Chamsys MQ70

## Front of House

**Fixed and unchangeable**

### **3.9m from stage**

- 10x ETC Source4 Tungsten HD LED
- 5x Robert Juliat 714 SX

### **12.5m from stage**

- 4x ETC Source4 Tungsten HD LED

## Moving light

- 10x Ayrton Stradale
- 10x Starway Daytona

## Fixture

- 10x Chauvet COLORdash Batten-Quad 12 LED
- 8x Sunstrip T10 (including 4 active)
- 9x projectors PC 2KW (Spotlight Milano)
- 14x projectors PC 1KW (RJ Lutin)
- 11x Robert Juliat 1 KW 613 SX
- 11x Robert Juliat 1 KW 614 SX
- 11x Robert Juliat 2 KW 714 SX
- 60x Pars 64 (20x CP60 / 20x CP61 / 20x CP62)
- 2x sets of ACL
- 4x Blacklights (UV) 400w
- 16x Quartz 1 KW (Horiziodes,Cycliode)

## Followspot

- 1x Robert Juliat Victor 1800W HMI

## Smoke Machine

- 1x MDG ATMe + Martin AF1

## Stand

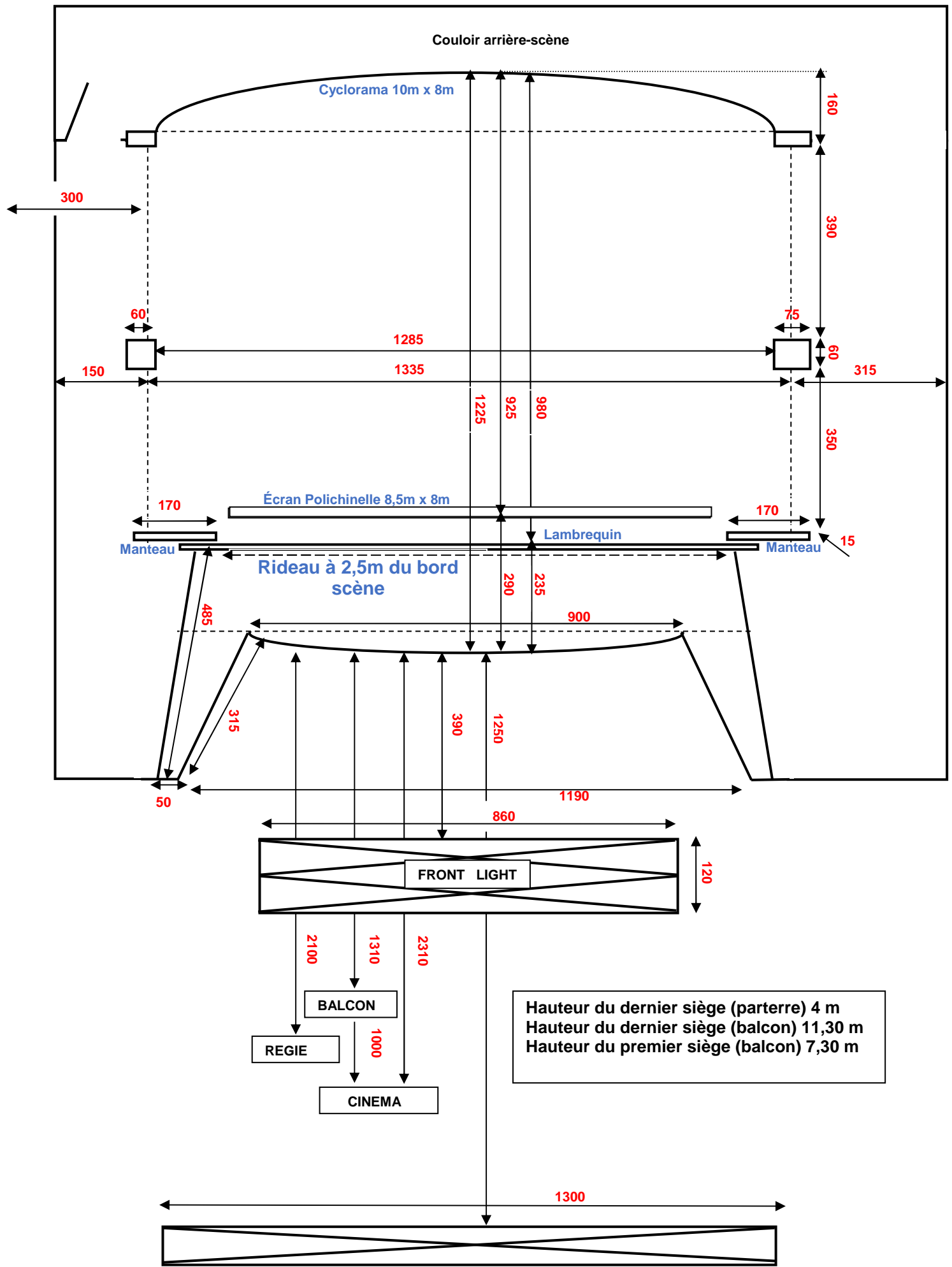
- 11x Manfrotto (4x Black - 7x Silver / H 3.2m - 40Kg)
- 2x Manfrotto Wind Up Black (H 3.66m - 80Kg)

## Lateral Tower

- 10x Lateral Tower

## Power

- 174x Robert Juliat 3KW dimmers
- 1x 32A CEE/TRI
- 1x 63A CEE/TRI
- 1x 125A CEE/TRI



**PLAN de SCENE avec ses DIMENSIONS & DISTANCES**

**Perche électrique (250KG MAX)**

E.1 Patience lointain Bleu Foncé

E.2

E.3

E.4

E.5 Pendrillons & frise

E.6

Écran

E.7 Frise

E.8 Lambrequin

E.9

**Perche contre balancé :**

(Longueur 10m - 250KG MAX)

**Espacement de 30cm**

M1

M2

M3 Frise

M4 Pendrillons

M5

**Espacement de 25cm**

M6 Frise

M7 Patience mi-plateau Bleu Foncé

M8

M9

M10

M11 Frise

M12 Pendrillons

M13

M14

M15

M16

M17

M18

M19 Frise

M20 Pendrillons

M21 horiziodes

**Pendrillon**

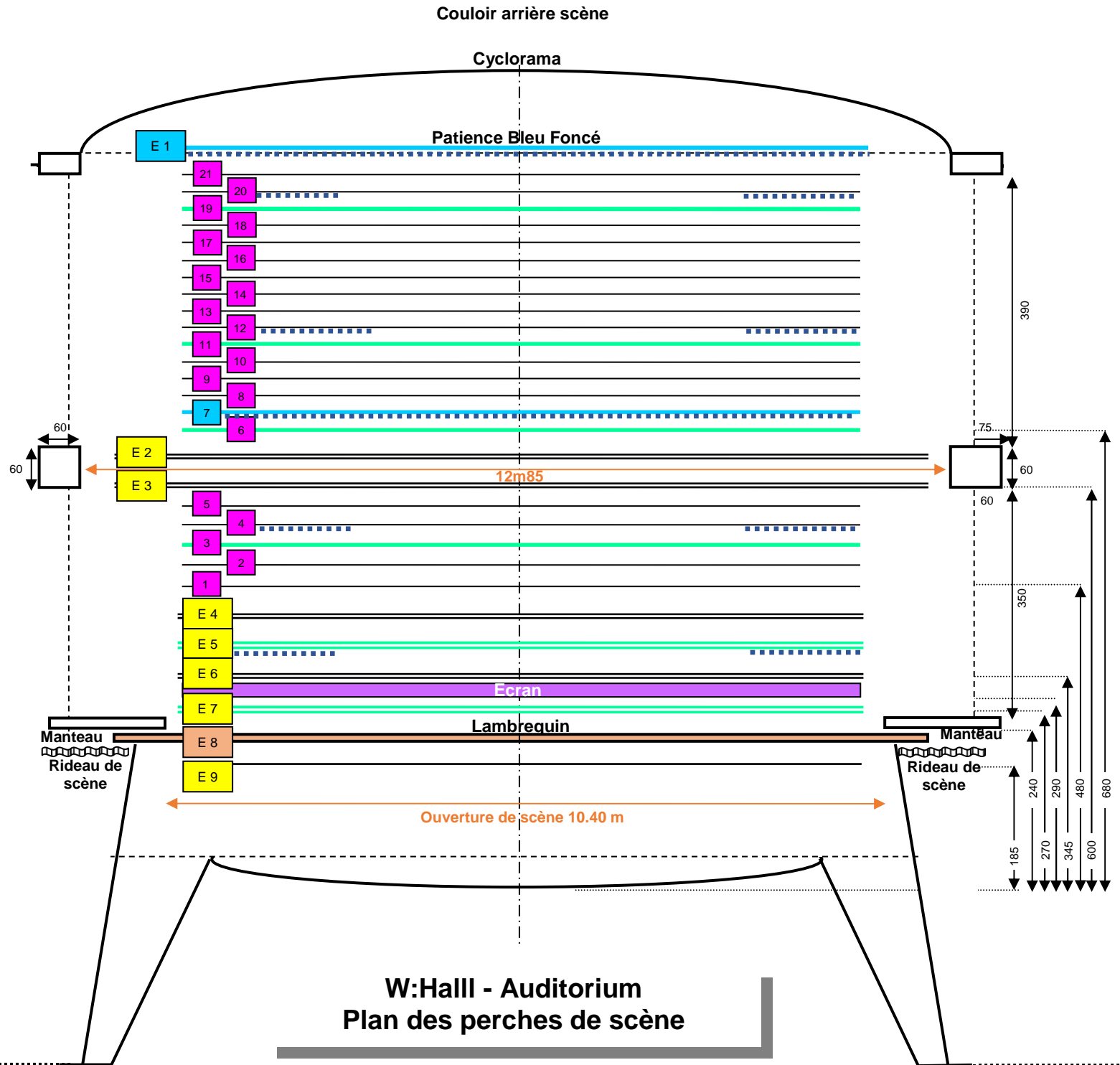
Largeur : 1.80 m

Hauteur : 8.00 m

Ouverture de pendrillon : 10.00 m

**Frise**

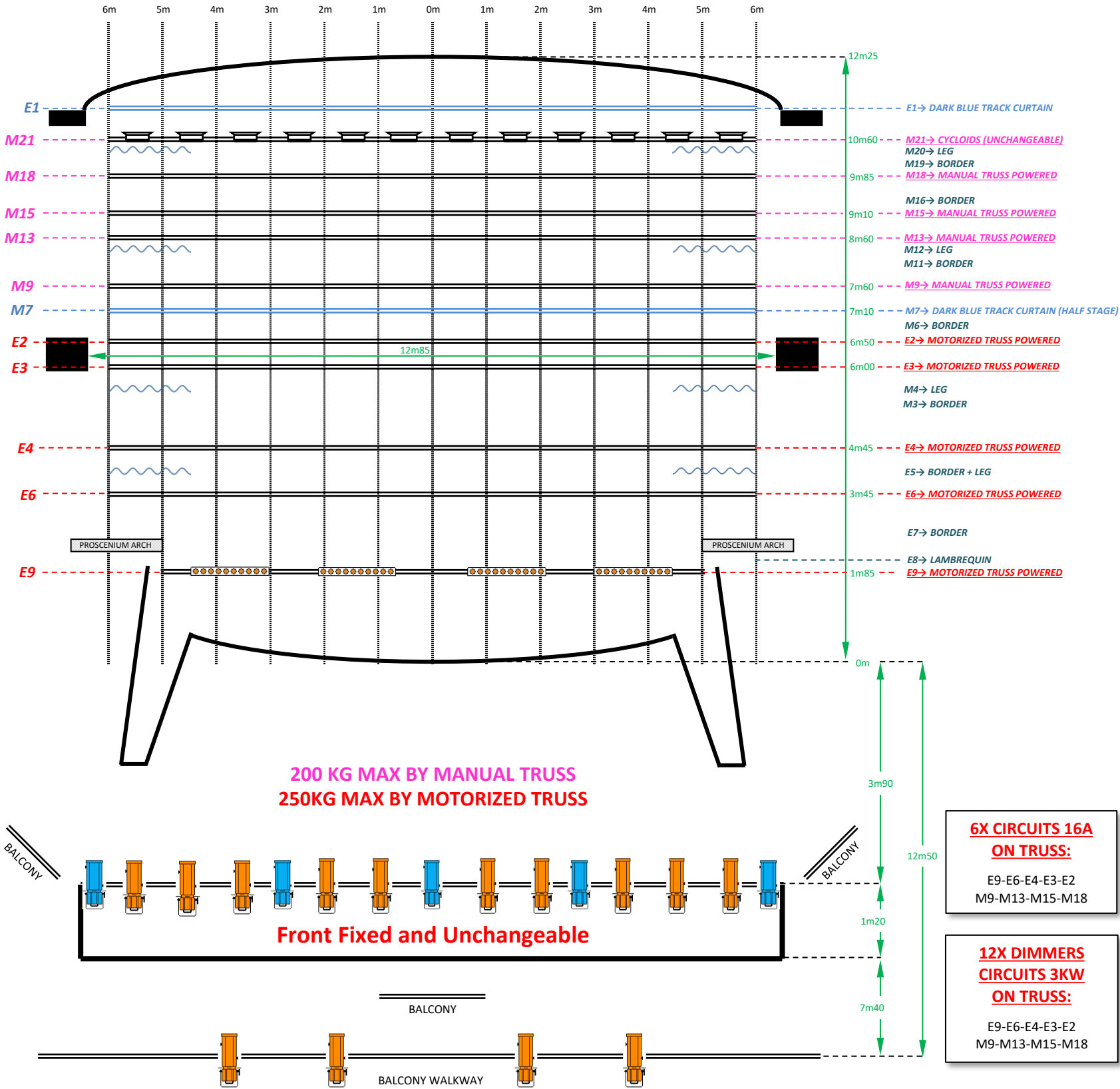
Hauteur : 2.40 m



# AUDITORIUM GRIL

DATE \_\_\_\_\_ NAME OF THE EVENT \_\_\_\_\_

# W:Hall



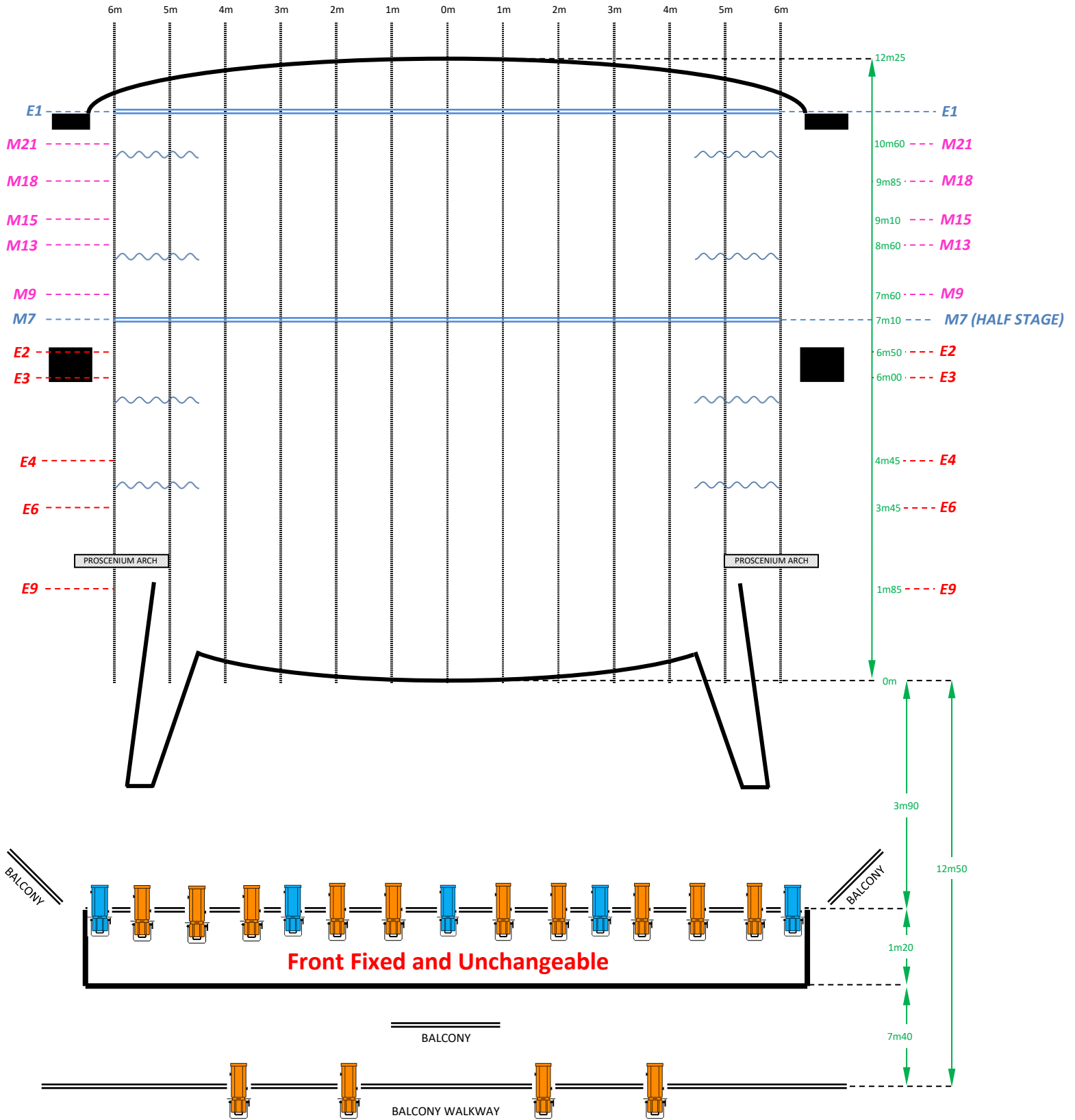
|             |                         |                    |                 |                                      |                                     |                     |
|-------------|-------------------------|--------------------|-----------------|--------------------------------------|-------------------------------------|---------------------|
| 14x PC 1 KW | 11x R Juliat 613SX 1 KW | 4x Sunstrip Passif | 20x Par 64 CP60 | 10x Chauvet COLORdash Batten Quad 12 | 4x UV Blackgun                      | 10x AYRTON Stradale |
| 8x PC 2 Kw  | 11x R Juliat 614SX 1KW  | 4x Sunstrip Actif  | 20x Par 64 CP61 | 2x Pair ACL Bar OR 4x Solo ACL Bar   | 14x ETC SOURCE FOUR Tungsten HD LED | 10x STARWAY Daytona |
| Cycloids    | 11x R Juliat 714SX 2KW  |                    | 20x Par 64 CP62 |                                      |                                     |                     |

# AUDITORIUM GROUND

DATE

NAME OF THE EVENT

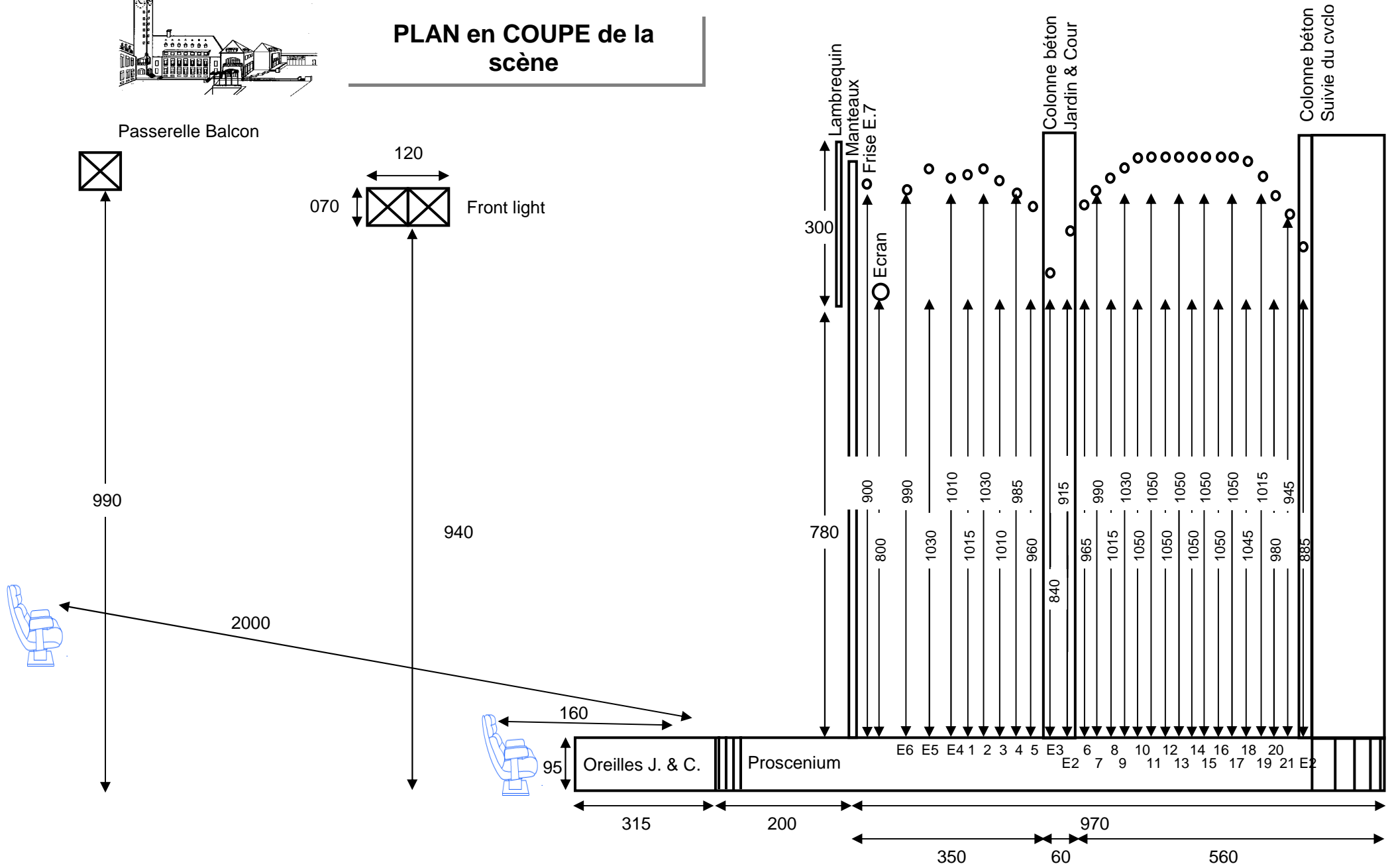
# W:Hall



|   |                               |                       |                    |  |   |  |                   |
|---|-------------------------------|-----------------------|--------------------|--|---|--|-------------------|
| 14x<br>PC 1 KW  | 11x<br>R Juliet 613SX<br>1 KW | 4x<br>Sunstrip Passif | 20x<br>Par 64 CP60 | 10x<br>Chauvet<br>COLORdash Batten<br>Quad 12  | 4x<br>UV Blackgun                         | 10x<br>AYRTON Stradale   |                   |
| 8x<br>PC 2 Kw   | 11x<br>R Juliet 614SX<br>1KW  | 4x<br>Sunstrip Actif  | 20x<br>Par 64 CP61 | 2x Pair ACL Bar<br>OR<br>4x Solo ACL Bar   | 14x<br>ETC SOURCE FOUR<br>Tungsten HD LED | 10x<br>STARWAY Daytona   |                   |
| Cycloids  | 11x<br>R Juliet 714SX<br>2KW  |                       | 20x<br>Par 64 CP62 |  |   | 11x<br>Manfrotto<br>(H: 3,2m)  | 20x<br>Base Plate |
| <b>Podiums :</b><br><div style="display: flex; justify-content: space-around;"> <div>H =<br/>24X → 200cm x 100cm</div> <div>H =<br/>10X → 200cm x 50cm</div> <div>H =<br/>5X → 100cm x 100cm</div> </div> |                               |                       |                    | <b>Various Heights:</b><br>20cm - 40x<br>40cm - 40x<br>60cm - 68x<br>80cm - 60x<br>100cm - 20x |   | <b>Rolling Riser:</b><br>Height → 20cm MAX<br>Size → 1m x 2m<br>2m x 2m<br>3m x 2m |                   |



# PLAN en COUPE de la scène



**PATCH DMX - AUDITOTIUM**

**Univers A - L1**

| <b>Id Fixt</b> | <b>Type</b> | <b>Model</b> | <b>Param</b> | <b>Mode</b> | <b>Adresse</b> | <b>Bibliothèque</b>                          |
|----------------|-------------|--------------|--------------|-------------|----------------|--|
| 1 > 199        | Dimmer      | Dimmer       | 1            | 1           | 1 >199         | Dimmer                                       |
| 401            | ETC         | Source 4     | 15           | Studio HSIC | 200            | ETC Source 4<br>Tungsten Std<br>HD<br>HSIC+7 |
| 402            | ETC         | Source 4     | 15           |             | 215            |  |
| 403            | ETC         | Source 4     | 15           |             | 230            |  |
| 404            | ETC         | Source 4     | 15           |             | 245            |  |
| 411            | ETC         | Source 4     | 15           |             | 260            |  |
| 412            | ETC         | Source 4     | 15           |             | 275            |  |
| 413            | ETC         | Source 4     | 15           |             | 290            |  |
| 414            | ETC         | Source 4     | 15           |             | 305            |  |
| 415            | ETC         | Source 4     | 15           |             | 320            |  |
| 416            | ETC         | Source 4     | 15           |             | 335            |  |
| 417            | ETC         | Source 4     | 15           |             | 350            |  |
| 418            | ETC         | Source 4     | 15           |             | 365            |  |
| 419            | ETC         | Source 4     | 15           |             | 380            |  |
| 420            | ETC         | Source 4     | 15           |             | 395            |  |
| 701            | Showtec     | Sunstrip T10 | 10           | Mode 10CH   | 450            | Showtec Sunstrip MK2                         |
| 702            | Showtec     | Sunstrip T10 | 10           |             | 460            |  |
| 703            | Showtec     | Sunstrip T10 | 10           |             | 470            |  |
| 704            | Showtec     | Sunstrip T10 | 10           |             | 480            |  |
| 520            | Table LED   | Whalll       | 4            | Mode 4 CH   | 500            | RGBW 4CH                                     |
| 525            | Table LED   | Whalll       | 4            |             | 505            |  |
| 510            | Salle       | Parterre     | 1            | 1           | 510            | Dimmer                                       |
| 511            | Salle       | Sous Balcon  | 1            |             | 511            |  |
| 512            | Salle       | Balon        | 1            |             | 512            |  |

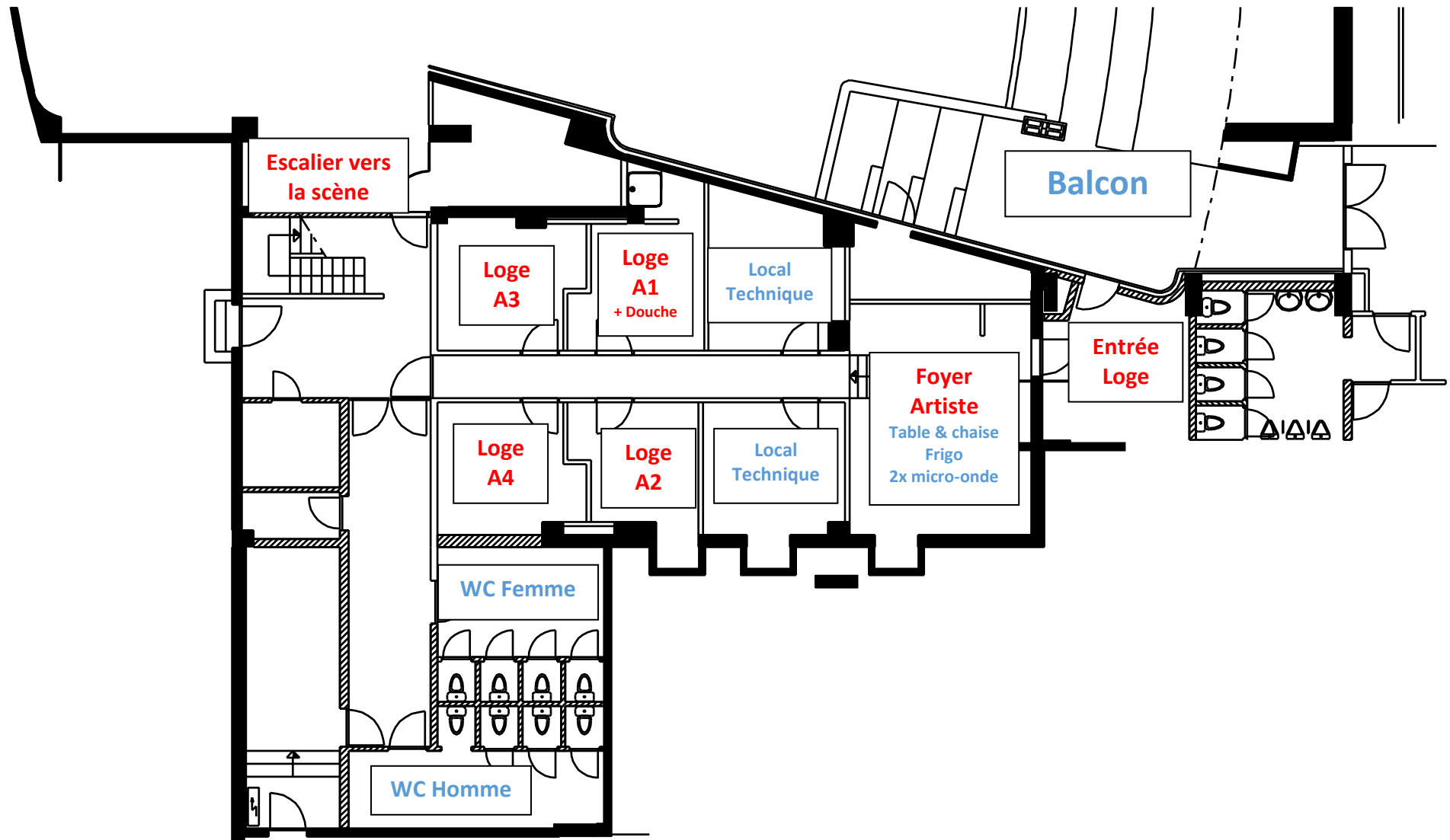
**PATCH DMX - AUDITOTIUM**

**Univers A - L1**

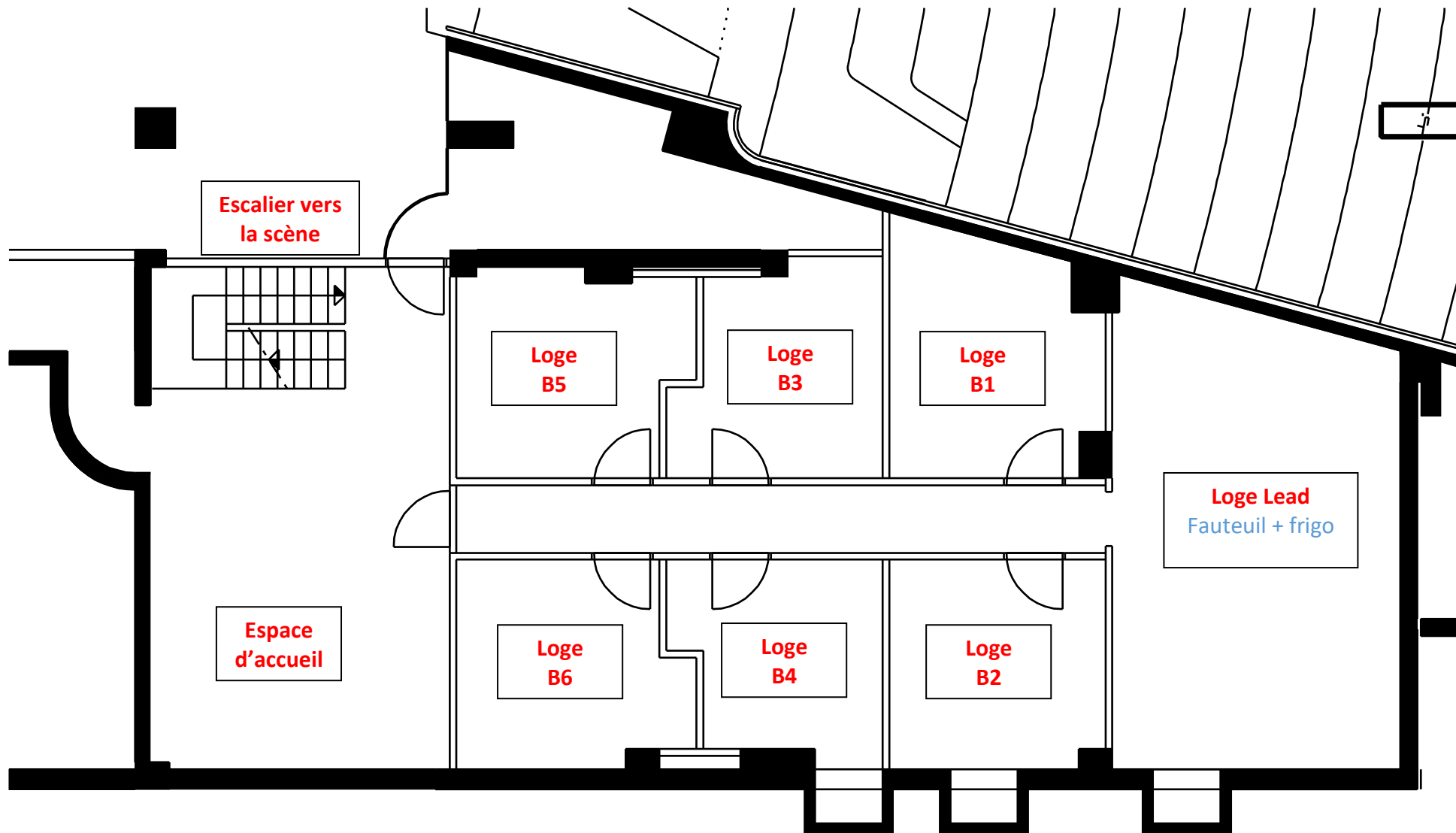
**ETC Source 4 Tungsten HD LED - Dimmer Mode**

| Intensité | CTO/CTB | FRONT<br><br>2,9M<br>from stage | Intensité | CTO/CTB | BALCON<br><br>12,5M<br>from stage |
|-----------|---------|---------------------------------|-----------|---------|-----------------------------------|
| 263       | 266     |                                 | 203       | 206     |                                   |
| 278       | 281     |                                 | 218       | 221     |                                   |
| 293       | 296     |                                 | 233       | 236     |                                   |
| 308       | 311     |                                 | 248       | 251     |                                   |
| 323       | 326     |                                 |           |         |                                   |
| 338       | 341     |                                 |           |         |                                   |
| 353       | 356     |                                 |           |         |                                   |
| 368       | 371     |                                 |           |         |                                   |
| 383       | 386     |                                 |           |         |                                   |
| 395       | 401     |                                 |           |         |                                   |

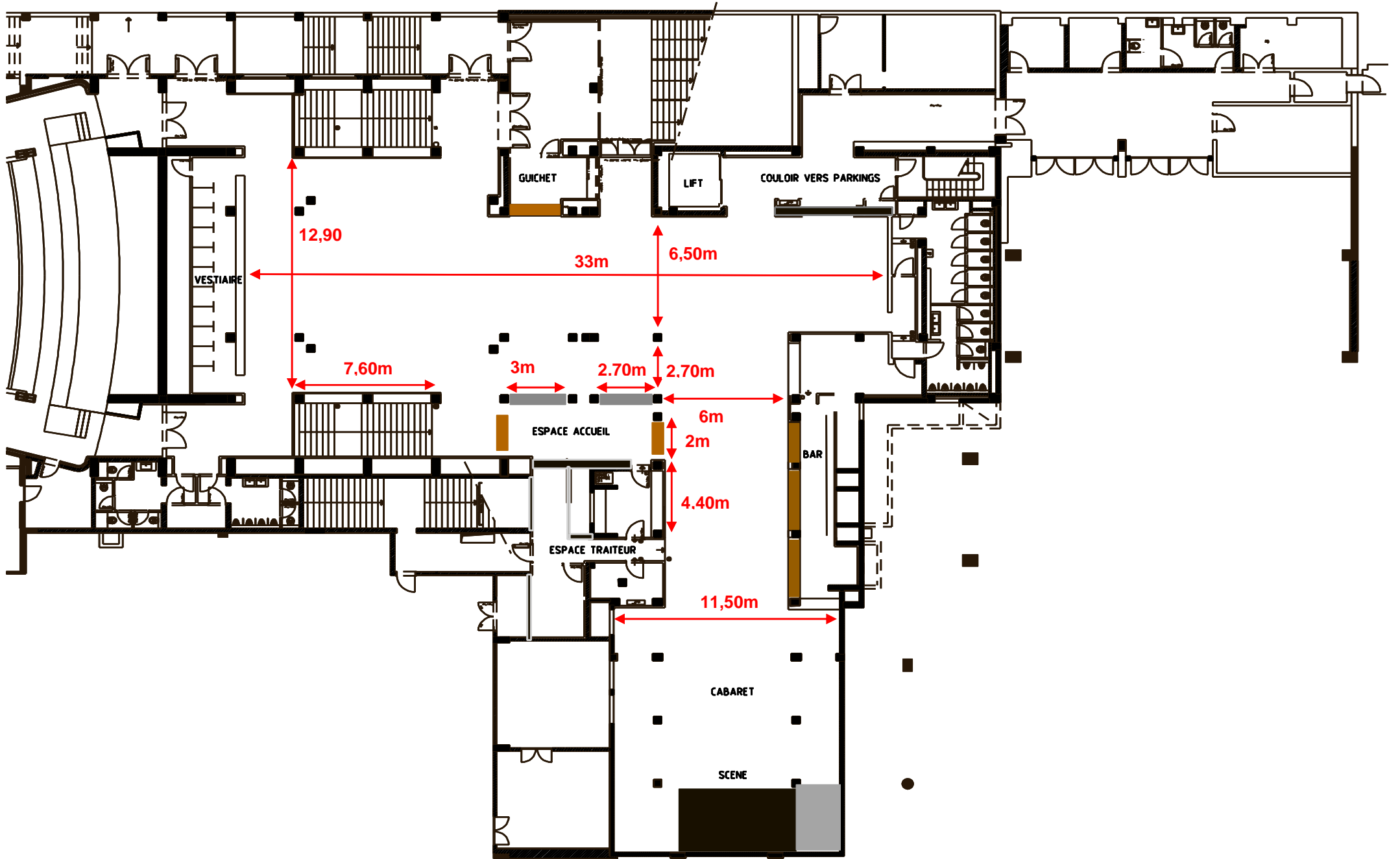
# LOGE Auditorium - Niveau -1

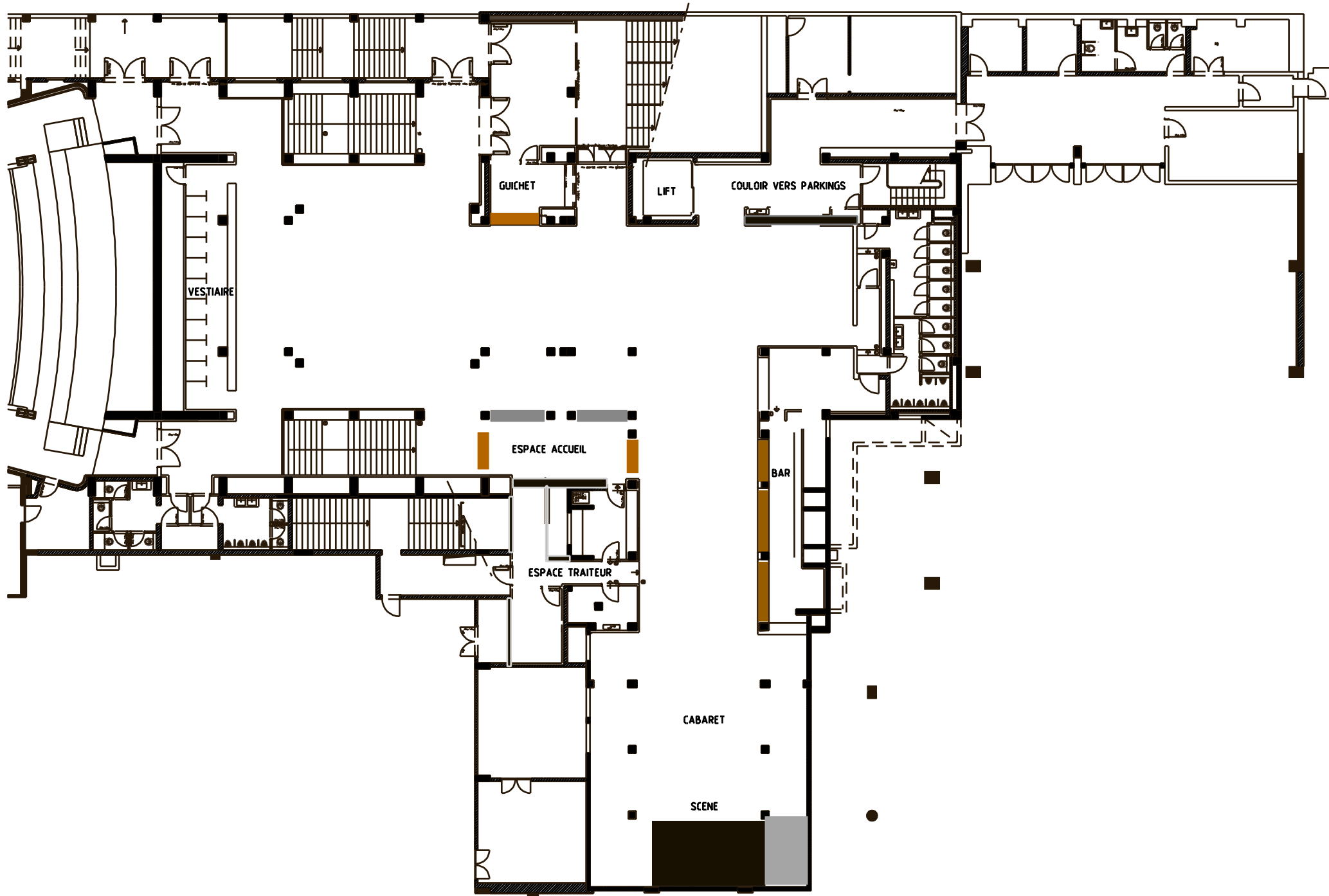


## LOGE Auditorium - Niveau -2



# PLAN DU FOYER DE L'AUDITORIUM





## Auditorium - Numérotations des places (662 places)

|      |      |      |      |      |      |      |      |     |     |     |     |     |      |      |      |      |      |      |      |      |
|------|------|------|------|------|------|------|------|-----|-----|-----|-----|-----|------|------|------|------|------|------|------|------|
| LL18 | LL16 | LL14 | LL12 | LL10 | LL8  | LL6  | LL4  | LL2 | LL1 | LL3 | LL5 | LL7 | LL9  | LL11 | LL13 | LL15 | LL17 |      |      |      |
| HH22 | HH20 | HH18 | HH16 | HH14 | HH12 | HH10 | HH8  | HH6 | HH4 | HH2 | HH1 | HH3 | HH5  | HH7  | HH9  | HH11 | HH13 | HH15 | HH17 |      |
| GG22 | GG20 | GG18 | GG16 | GG14 | GG12 | GG10 | GG8  | GG6 | GG4 | GG2 | GG1 | GG3 | GG5  | GG7  | GG9  | GG11 | GG13 | GG15 | GG17 | GG19 |
| FF22 | FF20 | FF18 | FF16 | FF14 | FF12 | FF10 | FF8  | FF6 | FF4 | FF2 | FF1 | FF3 | FF5  | FF7  | FF9  | FF11 | FF13 | FF15 | FF17 |      |
| EE24 | EE22 | EE20 | EE18 | EE16 | EE14 | EE12 | EE10 | EE8 | EE6 | EE4 | EE2 | EE1 | EE3  | EE5  | EE7  | EE9  | EE11 | EE13 | EE15 | EE17 |
| DD22 | DD20 | DD18 | DD16 | DD14 | DD12 | DD10 | DD8  | DD6 | DD4 | DD2 | DD1 | DD3 | DD5  | DD7  | DD9  | DD11 | DD13 | DD15 | DD17 |      |
| CC18 | CC16 | CC14 | CC12 | CC10 | CC8  | CC6  | CC4  | CC2 | CC1 | CC3 | CC5 | CC7 | CC9  | CC11 | CC13 | CC15 | CC17 |      |      |      |
| BB16 | BB14 | BB12 | BB10 | BB8  | BB6  | BB4  | BB2  | BB1 | BB3 | BB5 | BB7 | BB9 | BB11 | BB13 | BB15 | BB17 |      |      |      |      |
| AA20 | AA18 | AA16 | AA14 | AA12 | AA10 | AA8  | AA6  | AA4 | AA2 | AA1 | AA3 | AA5 | AA7  | AA9  | AA11 | AA13 | AA15 | AA17 | AA19 |      |

|      |      |      |      |
|------|------|------|------|
| LL19 | LL21 | LL23 | LL25 |
| HH19 | HH21 | HH23 | HH25 |
| GG21 | GG23 | GG25 |      |
| FF19 | FF21 | FF23 |      |
| EE19 | EE21 | EE23 |      |
| DD19 | DD21 | DD23 |      |

### BALCON (196 places)



|     |     |     |     |     |     |     |     |     |    |    |    |     |     |     |     |     |     |     |     |     |     |     |     |     |     |
|-----|-----|-----|-----|-----|-----|-----|-----|-----|----|----|----|-----|-----|-----|-----|-----|-----|-----|-----|-----|-----|-----|-----|-----|-----|
| V22 | V20 | V18 | V16 | V14 | V12 | V10 | V8  | V6  | V4 | V2 | V1 | V3  | V5  | V7  | V9  | V11 | V13 | V15 | V17 | V19 | V21 | V23 |     |     |     |
| U26 | U24 | U22 | U20 | U18 | U16 | U14 | U12 | U10 | U8 | U6 | U4 | U2  | U1  | U3  | U5  | U7  | U9  | U11 | U13 | U15 | U17 | U19 | U21 | U23 | U25 |
| T24 | T22 | T20 | T18 | T16 | T14 | T12 | T10 | T8  | T6 | T4 | T2 | T1  | T3  | T5  | T7  | T9  | T11 | T13 | T15 | T17 | T19 | T21 | T23 |     |     |
| S24 | S22 | S20 | S18 | S16 | S14 | S12 | S10 | S8  | S6 | S4 | S2 | S1  | S3  | S5  | S7  | S9  | S11 | S13 | S15 | S17 | S19 | S21 | S23 |     |     |
| R22 | R20 | R18 | R16 | R14 | R12 | R10 | R8  | R6  | R4 | R2 | R1 | R3  | R5  | R7  | R9  | R11 | R13 | R15 | R17 | R19 | R21 |     |     |     |     |
| P22 | P20 | P18 | P16 | P14 | P12 | P10 | P8  | P6  | P4 | P2 | P1 | P3  | P5  | P7  | P9  | P11 | P13 | P15 | P17 | P19 | P21 |     |     |     |     |
| O20 | O18 | O16 | O14 | O12 | O10 | O8  | O6  | O4  | O2 | O1 | O3 | O5  | O7  | O9  | O11 | O13 | O15 | O17 | O19 | O21 |     |     |     |     |     |
| N20 | N18 | N16 | N14 | N12 | N10 | N8  | N6  | N4  | N2 | N1 | N3 | N5  | N7  | N9  | N11 | N13 | N15 | N17 | N19 |     |     |     |     |     |     |
| M18 | M16 | M14 | M12 | M10 | M8  | M6  | M4  | M2  | M1 | M3 | M5 | M7  | M9  | M11 | M13 | M15 | M17 | M19 |     |     |     |     |     |     |     |
| L22 | L20 | L18 | L16 | L14 | L12 | L10 | L8  | L6  | L4 | L2 | L1 | L3  | L5  | L7  | L9  | L11 | L13 | L15 | L17 | L19 | L21 |     |     |     |     |
| K20 | K18 | K16 | K14 | K12 | K10 | K8  | K6  | K4  | K2 | K1 | K3 | K5  | K7  | K9  | K11 | K13 | K15 | K17 | K19 | K21 |     |     |     |     |     |
| J20 | J18 | J16 | J14 | J12 | J10 | J8  | J6  | J4  | J2 | J1 | J3 | J5  | J7  | J9  | J11 | J13 | J15 | J17 | J19 |     |     |     |     |     |     |
| H18 | H16 | H14 | H12 | H10 | H8  | H6  | H4  | H2  | H1 | H3 | H5 | H7  | H9  | H11 | H13 | H15 | H17 | H19 |     |     |     |     |     |     |     |
| G20 | G18 | G16 | G14 | G12 | G10 | G8  | G6  | G4  | G2 | G1 | G3 | G5  | G7  | G9  | G11 | G13 | G15 | G17 | G19 |     |     |     |     |     |     |
| F18 | F16 | F14 | F12 | F10 | F8  | F6  | F4  | F2  | F1 | F3 | F5 | F7  | F9  | F11 | F13 | F15 | F17 | F19 |     |     |     |     |     |     |     |
| E18 | E16 | E14 | E12 | E10 | E8  | E6  | E4  | E2  | E1 | E3 | E5 | E7  | E9  | E11 | E13 | E15 | E17 |     |     |     |     |     |     |     |     |
| D16 | D14 | D12 | D10 | D8  | D6  | D4  | D2  | D1  | D3 | D5 | D7 | D9  | D11 | D13 | D15 | D17 |     |     |     |     |     |     |     |     |     |
| C16 | C14 | C12 | C10 | C8  | C6  | C4  | C2  | C1  | C3 | C5 | C7 | C9  | C11 | C13 | C15 |     |     |     |     |     |     |     |     |     |     |
| B14 | B12 | B10 | B8  | B6  | B4  | B2  | B1  | B3  | B5 | B7 | B9 | B11 | B13 | B15 |     |     |     |     |     |     |     |     |     |     |     |
| A14 | A12 | A10 | A8  | A6  | A4  | A2  | A1  | A3  | A5 | A7 | A9 | A11 | A13 |     |     |     |     |     |     |     |     |     |     |     |     |

|     |     |     |
|-----|-----|-----|
| S25 | S27 |     |
| R23 | R25 | R27 |
| P23 | P25 | P27 |
| O23 | O25 | O27 |
| N21 | N22 | N25 |
| M21 | M23 | M25 |
| L23 | L25 | L27 |
| K23 | K25 | K27 |
| J21 | J23 | J25 |
| H21 | H23 | H25 |
| G21 | G23 | G25 |

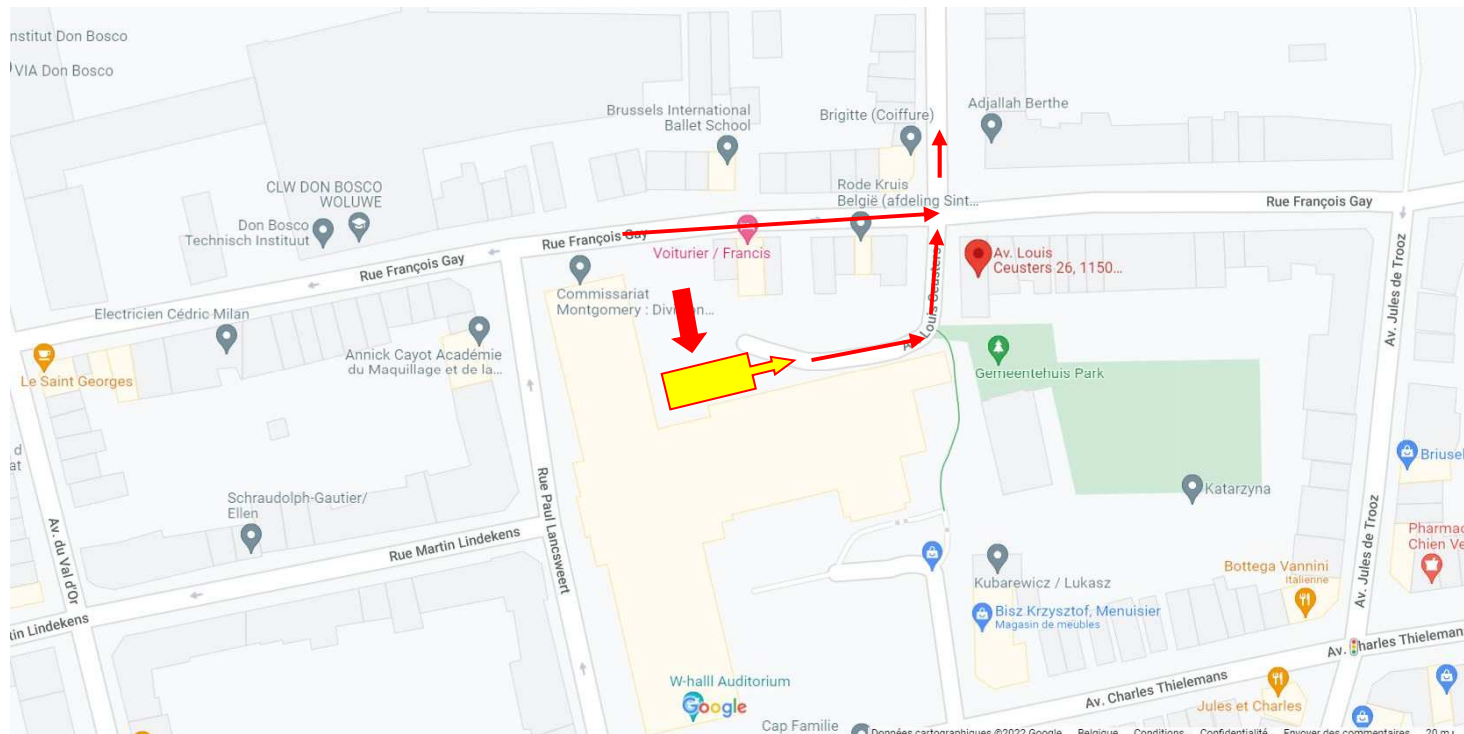
### PARTERRE (466 places)

## Dock and Artist Parking (1x truck & 3x car)

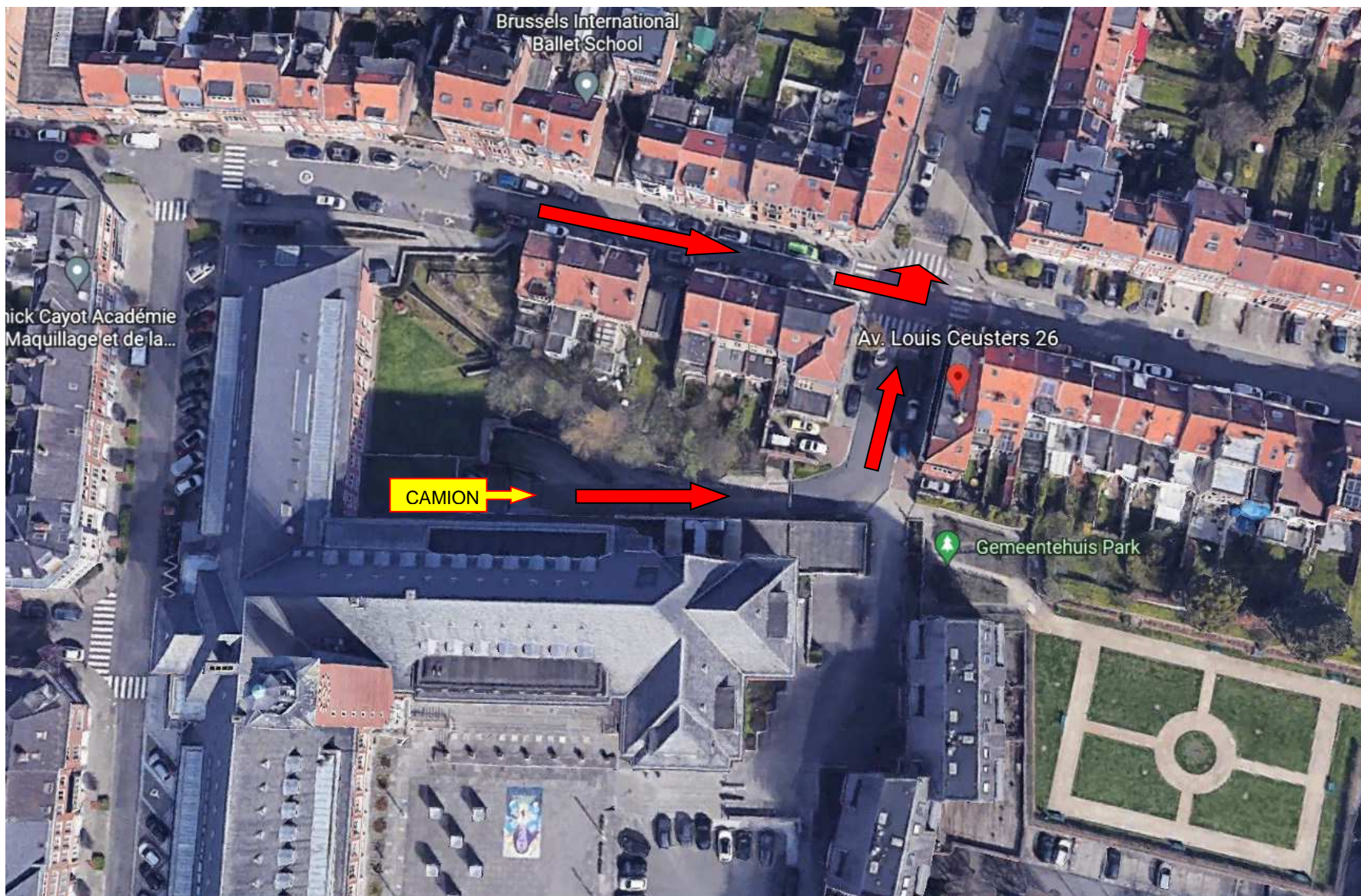
### 26 Avenue Louis Ceusters, 1150 Brussels – Belgium

(Ne pas sonner et continuer au bout du chemin)  
(Niet aanbellen en doorlopen tot het einde van de straat)  
(Do not ring the bell and continue to the end of the street)

**LEVER L'ESSIEU ARRIÈRE DU BUS EN BAS DE LA RAMPE D'ACCÈS AFIN DE NE PAS FROTTER LE TIMON DE LA REMORQUE SUR LE BÉTON  
DE ACHTERAS VAN DE BUS ONDERAAN DE OPRIT OPHEFFEN ZODAT DE DISSEL VAN DE AANHANGWAGEN NIET OVER HET BETON SCHUURT  
LIFT THE REAR AXLE OF THE BUS AT THE BOTTOM OF THE ACCESS RAMP SO AS NOT TO RUB THE DRAWBAR OF THE TRAILER ON THE CONCRETE**



**W:Hall / Centre Culturel & de Congrès de WSP ASBL  
Avenue Ch. Thielemans, 93 - 1150 Bruxelles  
RPM Région de BXL-Capitale - N° d'entreprise : 412.532.585**



**W:Hall / Centre Culturel & de Congrès de WSP ASBL**  
**Avenue Ch. Thielemans, 93 - 1150 Bruxelles**  
**RPM Région de BXL-Capitale - N° d'entreprise : 412.532.585**